



Aluminium Architectural Systems

**Lift&Slide Hardware Set**



## Enjoy the comfort of your lift-and-slide systems with ASAŞ reliability.

You will no longer have to think about hardware problems. We provide a holistic solution to end users by offering our years of experience and expertise in architectural systems in the production of lift-and-slide systems as well as opening hardware. **Move wide and heavy sashes comfortably without sacrificing performance** with our lift and slide systems and hardware set, and experience high standard performance with **ASAŞ** quality.

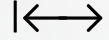
### Features & Benefits



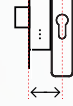
**Load Capacity**  
300 ~ 400 kg



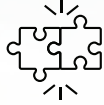
**Height Admissible Size**  
min. 750 ~ max. 3200  
(extension 3200 mm + 500 mm)



**Width Admissible Size**  
Min 700 mm - Max 3300 mm



**Backset Distance**  
37,5 mm



#### Compatability

Compatible with our RST 116 and RST 162 systems. Can be used with Holdline handle series.



#### Easy Assembling

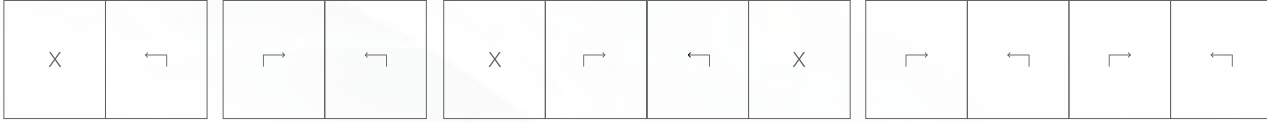
It is assembled quickly and effortlessly, saving time and labour.



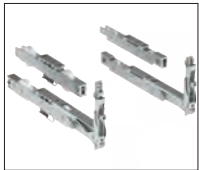
#### Certification

TS 13126-08  
Certification.

### Opening Types

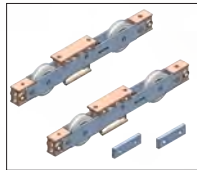


### Lift&Slide Hardware Set



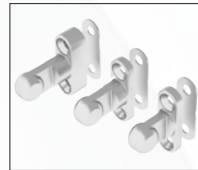
#### L&S Roller Set

With a carrying capacity of up to 300 kg, it provides users with superior comfort when moving the wings.



#### L&S Additional Roller Set

It offers an extra carrying capacity of up to 400kg on wide and heavy sashes while operating without compromising the comfort of use.



#### Lock Plate

Zamac alloy lock plate provides superior safety and long life performance.



#### Espagnolette

Allows application in high spans without extra locking with a one-piece 3200 mm long espagnolette; offers system suitability with a backset distance of 37.5 mm.



#### Handle

Handle with or w/out cylinder, outside cup handle options provide diversity in the product range, while the curved design at the end of the handle ensures safety.

### ASAŞ Alüminyum Sanayi ve Ticaret A.Ş.

#### Headquarters

Rüzgarlı Bahçe Mah., Kumlu Sok., No: 2  
Asaş İş Merkezi, 34810 Kavacık  
Beykoz - İstanbul, Türkiye  
T +90 216 680 07 80 F +90 216 680 07 81

[asastr.com](http://asastr.com)

[asasarchitecture.com.tr](http://asasarchitecture.com.tr)

### ASAS GmbH

Rasselsteiner Str. 101  
56564 Neuwied, Deutschland  
T +49 (0) 2631 90209-20  
F +49 (0) 2631 90209-11