

TEKNİK ÖZELLİKLERİ / TECHNICAL PROPERTIES

PROFİL GENİŞLİĞİ / PROFILE WIDTH	60mm
DİKME DERİNLİKLERİ / MULLION DEPTHS	80/100/120/140/150/180/255mm
KAYIT DERİNLİKLERİ / TRANSOM DEPTHS	68/88/108/128/148/158/188/248mm
PROFİL ET KALINLIĞI / PROFILE WALL THICKNESS	1,6 / 1,8 / 2 / 2,5mm
MİN. - MAX. CAM KALINLIĞI / MIN. - MAX. GLASS THICKNESS	20mm / 57mm
ISI BARIYERLERİ / THERMAL INSULATION BAR	14,8 / 24 / 34 mm

KULLANIM SEÇENEKLERİ / APPLICATION ALTERNATIVES

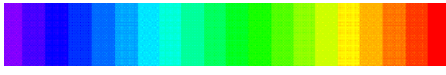
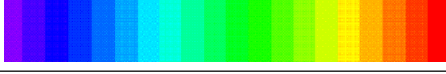


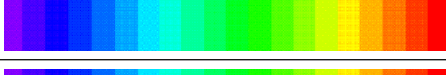

KAPAKLI CEPHE (REF60c) / FACADE WITH CAP (REF60c)	*
SİLİKON CEPHE (REF60s) / STRUCTURAL GLAZING (REF60s)	*
YARI KAPAKLI CEPHE (REF60ss) / SEMI STRUCTURAL GLAZING (REF60ss)	*
YÜKSEK YALITIMLI KAPAKLI CEPHE (REF60chi) / HIGH INSULATED FACADE WITH CAP (REF60chi)	*
YÜKSEK YALITIMLI SİLİKON CEPHE (REF60shi) / HIGH INSULATED STRUCTURAL GLAZING (REF60shi)	*
İÇE ÇİFT EKSEN AÇILIM KAPAKLI CEPHE (REF60tt) / TILT&TURN OPENING FACADE WITH CAP (REF60tt)	*
YATAY-YATAY TAŞIYICILI CEPHE SİSTEMİ (REF60t) / TRANSOM-TRANSOM CURTAIN WALL SYSTEM (REF60t)	*
ÇELİK TAŞIYICILI CEPHE SİSTEMİ (REF60t) / STEEL REINFORCEMENT CURTAIN WALL SYSTEM (REF60cst)	*

PERFORMANS DEĞERLERİ / PERFORMANCE VALUES

KAPAKLI CEPHE / FACADE WITH CAP

HAVA GEÇİRGENLİĞİ - EN 12152 (AIR PERMEABILITY)	1 (150 Pa)	2 (300 Pa)	3 (450 Pa)	4 (600 Pa)	AE (AE900 Pa)	
SU SIZDIRMAZLIĞI - EN 12154 (WATERTIGHTNESS)	R4 (150 Pa)	R5 (300 Pa)	R6 (450 Pa)	R7 (600 Pa)	RE... (600+ Pa)	RE1500 (1500 Pa)
RÜZGAR YÜKÜNE DAYANIM - EN 13830 (RESISTANCE TO WIND LOAD)	± 1600 Pa					
DARBE DAYANIMI - EN 14019 (IMPACT RESISTANCE)	E1 (200 mm)	E2 (300 mm)	E3 (450 mm)	E4 (700 mm)	E5 (950 mm)	

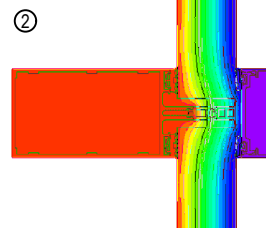
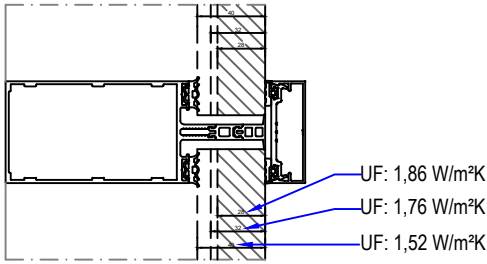
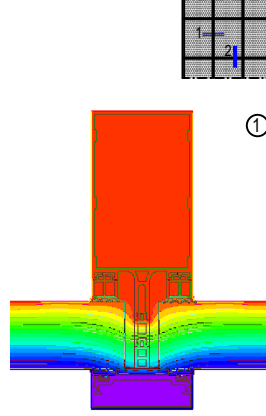
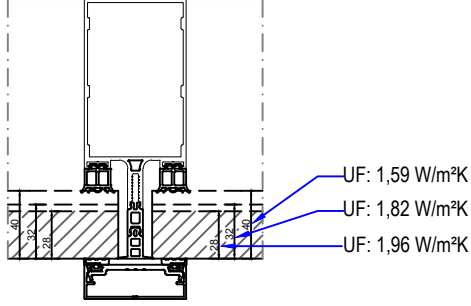
SİSTEM UF DEĞERLERİ - EN 10077-2 / THERMAL INSULATION VALUES

KAPAKLI SİSTEM (FACADE WITH CAP)		1,52 ~ 1,96 W/m²K
SİLİKON SİSTEM (STRUCTURAL GLAZING)		1,90 ~ 3,51 W/m²K
YÜKSEK YALITIMLI KAPAKLI SİSTEM (HIGH INSULATED FACADE WITH CAP)		0,839 ~ 0,923 W/m²K
YÜKSEK YALITIMLI SİLİKON SİSTEM (HIGH INSULATED STRUCTURAL GLAZING FACADE)		1,26 ~ 1,37 W/m²K
İÇE ÇİFT EKSEN AÇILIM KAPAKLI SİSTEM (TILT&TURN OPENING FACADE WITH CAP)		1,80 W/m²K
YATAY-YATAY TAŞIYICILI CEPHE SİSTEMİ (TRANSOM-TRANSOM CURTAIN WALL SYSTEM)		1,59 ~ 1,90 W/m²K

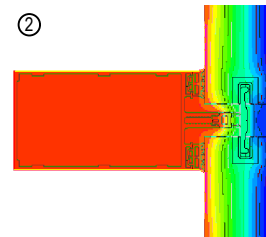
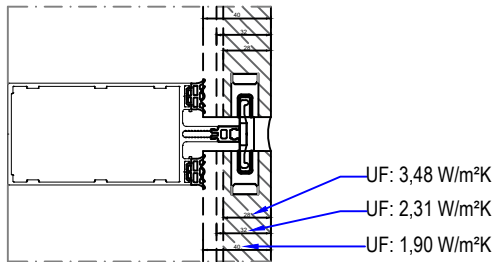
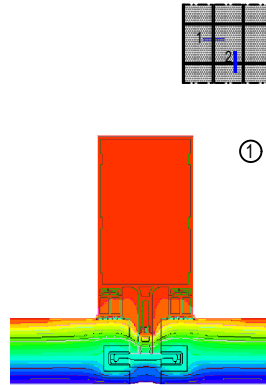
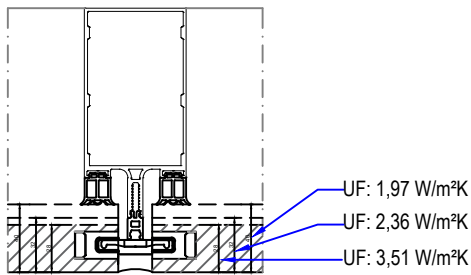
1. ALÜMİNYUM ALAŞIM / ALUMINIUM ALLOY	EN AW 6060 T66
2. MEKANİK ÖZELLİKLER / MECHANICAL PROPERTIES	EN 755-2
KOPMA AKMA MUKAVEMETİ / YIELD-FLOW STRENGTH	215 N/mm ² -60 N/ mm
UZAMA A50 / ELONGNATION A50	%6 (min.)
SERTLİK / HARDNESS	70 HRB
3.ÖLÇÜ TOLERANSLARI / DIMENSIONAL TOLLERANCES	EN 12020- 2
4. ISI BARIYERİ / THERMAL INSULATION BARS	PA 66 GF 25
5.YÜZEY İŞLEMLER / SURFACE TREATMENT	
5.1 ELOKSAL / ANODIC OXIDATION	EN 17611 / QUALANOD
KALINLIK / THICKNESS OF ANODIC OXIDATION	15-20 MICRON EN ISO 2360
5.2 TOZ BOYA / POWDER COATING	QUALICOAT-SEASIDE
KALINLIK / THICKNESS OF POWDER COATING	MIN 60 MICRON
6. TÜM FİTİLLER / ALL GASKETS	EPDM / POLİPROPİLEN
<p>*SİSTEM İMALATINDA SADECE BU SİSTEM İÇİN TASARLANAN VE ÜRETİLEN ; SİSTEM KATALOĞUNDA İLAN EDİLEN FİTİLLER KULLANILMALIDIR. FARKLI FİTİL KULLANIMLARI İŞLEVSEL VE TASARIMSAL SORUNLARA SEBEP OLABİLİR.</p> <p><i>THE GASKETS USED DURING ASSEMBLING AND INSTALLING THE COMPONENTS SHOULD BE ONLY THE ONES CREATED FOR THIS SYSTEM AND DISPLAYED IN THIS PRODUCT CATALOGUE. THE USE OF OTHER GASKETS OR/AND BRUSHES IT MAY CAUSE FUNCTIONAL AND DESIGN PROBLEMS.</i></p>	
7. AKSESUARLAR / ACCESSORIES	
<p>*İMALATTA KULLANILAN TÜM AKSESUARLAR SİSTEMİN YÜKSEK PERFORMANS İLE ÇALIŞABİLMESİ İÇİN SADECE BU SİSTEME ÖZEL OLARAK TASARLANMIŞTIR. KATALOGDA İLAN EDİLENDEN FARKLI AKSESUAR KULLANIMLARI SİSTEMİN DOĞRU ÇALIŞMASINI ENGELLEYEBİLİR.</p> <p><i>ALL THE ACCESSORIES USED FOR THE MANUFACTURING, MOUNTING, FUNCTIONING AND INSTALLATION OF THIS SYSTEM ARE SPECIFICALLY STUDIED FOR THIS SYSTEM IN ORDER TO INSURE PERFORMANCES AND A CORRECT FUNCTIONNING OF THE MODELS. THE USE OF OTHERS ACCESSORIES DIFFERENTS FROM THE ONES DISPLAYED IN THIS CATALOGUE IT MAY EFFECT OR/AND MAKE DANGEROUS THE FUNCTIONNING OF THE COMPONENT.</i></p>	

ISI YALITIM DEĞERLERİ (UF) / THERMAL INSULATION VALUES (UF):

KAPAKLI CEPHE (FACADE WITH CAP)

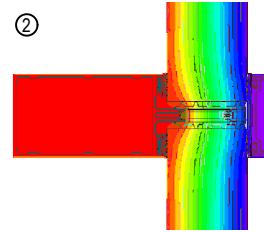
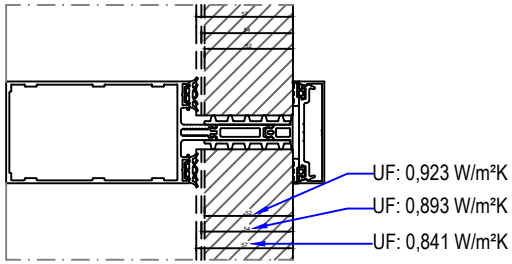
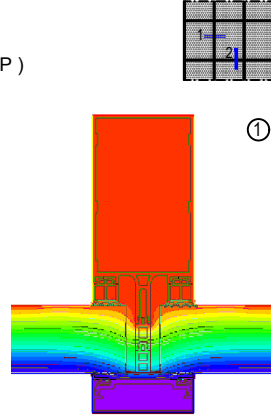
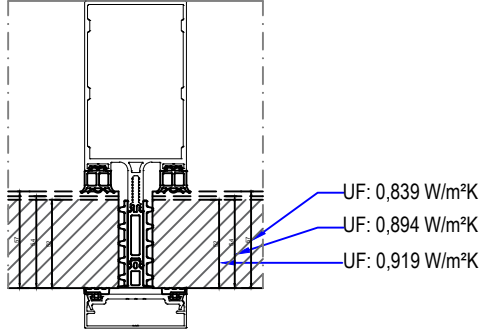


SİLİKON CEPHE (STRUCTURAL GLAZING)

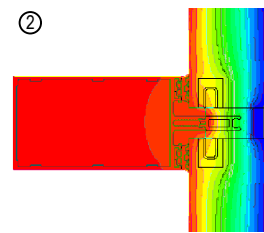
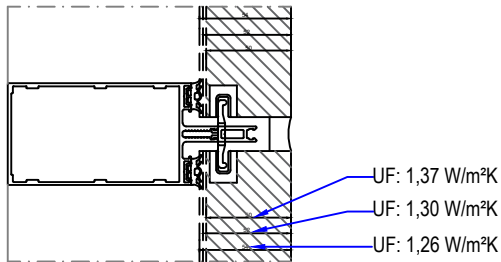
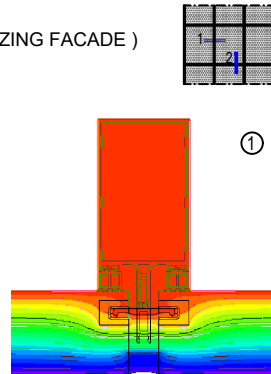
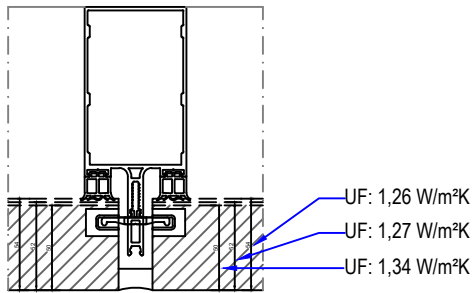


ISI YALITIM DEĞERLERİ (UF) / THERMAL INSULATION VALUES (UF):

YÜKSEK YALITIMLI KAPAKLI CEPHE (HIGH INSULATED FACADE WITH CAP)

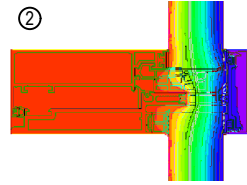
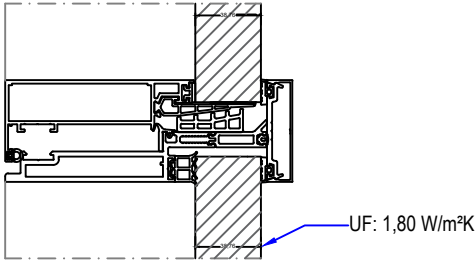
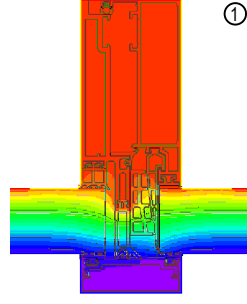
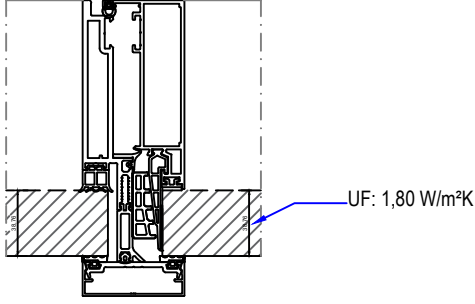


YÜKSEK YALITIMLI SİLİKON CEPHE (HIGH INSULATED STRUCTURAL GLAZING FACADE)



ISI YALITIM DEĞERLERİ (UF) / THERMAL INSULATION VALUES (UF):

İÇE ÇİFT EKSEN AÇILIM KAPAKLI CEPHE (TILT&TURN OPENING FACADE WITH CAP)



YATAY-YATAY TAŞIYICILI CEPHE SİSTEMİ (TRANSOM-TRANSOM CURTAIN WALL SYSTEM)

