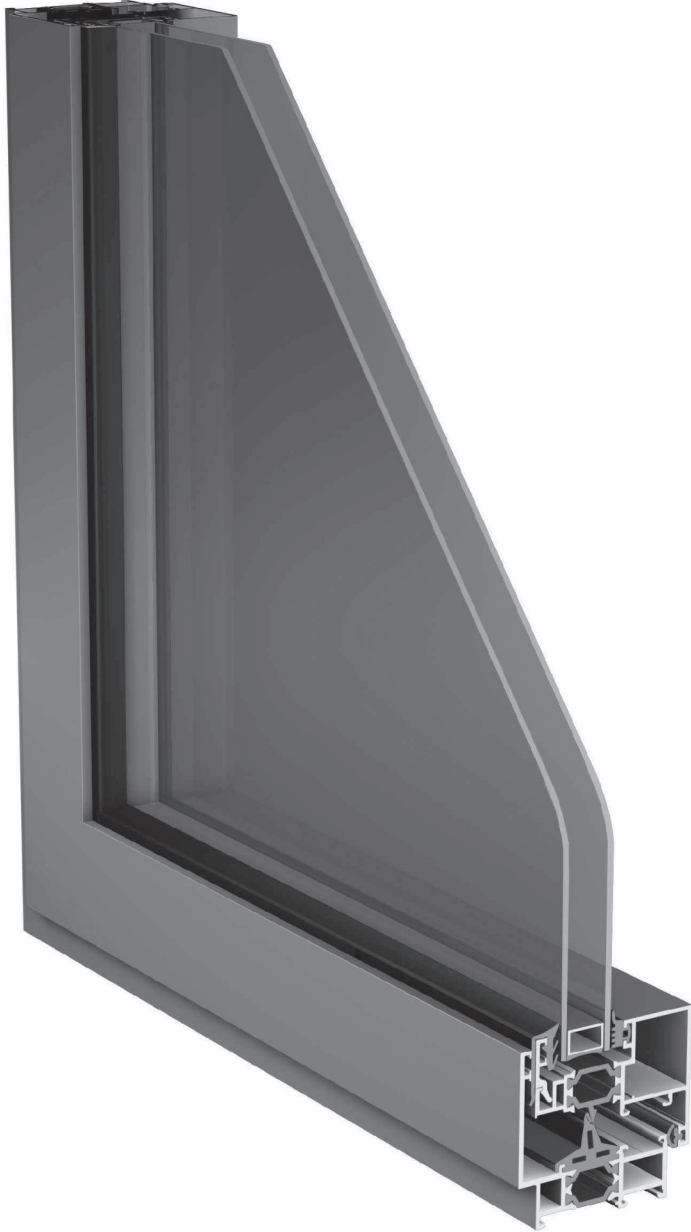




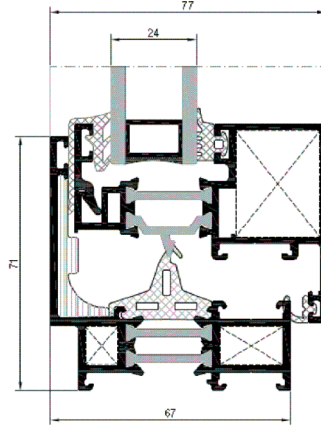
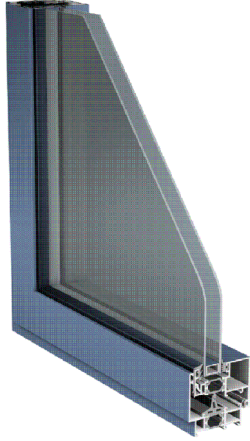
Alüminyum Mimari Sistemler
Aluminium Architectural Systems

MİMARİ KATALOG ARCHITECTURAL CATALOGUE

Alüminyum Kapı Pencere ve Giydirme Cephe Sistemleri
Aluminium Door Window and Facade Systems



RWT67



TEKNİK ÖZELLİKLER / TECHNICAL PROPERTIES

KASA DERİNLİĞİ / FRAME DEPTH	67,1mm
KANAT DERİNLİĞİ / VENT DEPTH	72,1mm
PROFİL ET KALINLIĞI / PROFILE GLASS THICKNESS	1,7 / 1,6 / 2mm
MAX. CAM KALINLIĞI / MAX. GLASS THICKNESS	24mm
ISI BARIYERLERİ / THERMAL INSULATION BAR	24mm

KULLANIM SEÇENEKLERİ / APPLICATION ALTERNATIVES

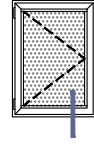
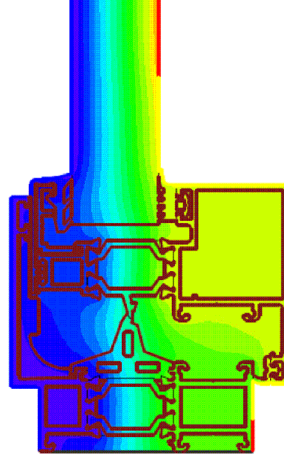
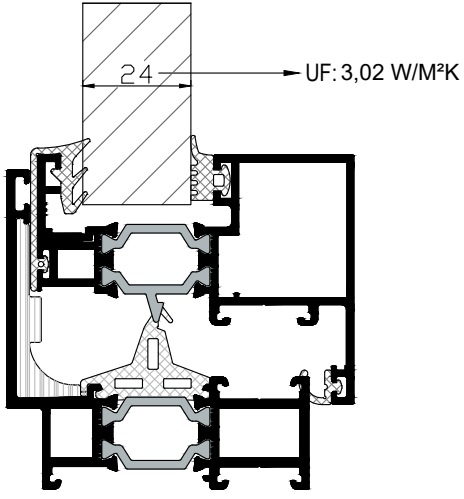
	KAPI DOOR	PENCERE WINDOW
İÇE AÇILIR / INWARD OPENING	•	•
VASİSTAS / BOTTOM HUNG		•
GİZLİ KANAT / HIDDEN VENT	•	•
ÇİFT EKSEN AÇILIM / TILT&TURN OPENING	•	•

PERFORMANS DEĞERLERİ / PERFORMANCE VALUES

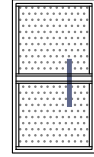
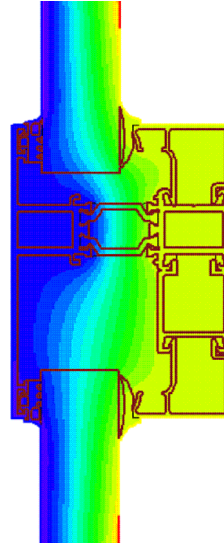
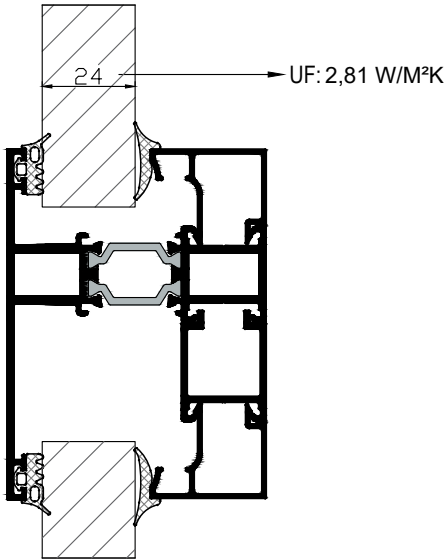
HAVA GEÇİRGENLİĞİ - EN 12207 (AIR PERMEABILITY)	1 (150 Pa)	2 (300 Pa)	3 (450 Pa)	4 (600 Pa)						
SU SIZDIRMAZLIĞI - EN 12208 (WATERTIGHTNESS)	2A (50 Pa)	3A (100 Pa)	4A (150 Pa)	5A (200 Pa)	6A (250 Pa)	7A (300 Pa)	8A (450 Pa)	9A (600 Pa)	E... (600+ Pa)	E1500 (1500 Pa)
RÜZGAR YÜKÜNE DAYANIM - EN 12210 (RESISTANCE TO WIND LOAD)	1 (400 Pa)	2 (800 Pa)	3 (1200 Pa)	4 (1600 Pa)	5 (2000 Pa)	E... (2000+ Pa)				
STATİK BURULMA - TS EN 13115 (STATIC TORSION)	4 (350 N)									
SİSTEM UF DEĞERİ - EN 10077-2 (THERMAL INSULATION VALUE)						2,77~3,02 W/m²K				
SİSTEM SES YALITIMI - TS EN ISO 717-1 (ACOUSTIC PERFORMANCE VALUE)						Rw(C;Ctr)=35,5(-2,4;-5,5) dB				

ISI YALITIM DEĞERLERİ (UF) / THERMAL INSULATION VALUE (UF):

Cam Kalınlıkları (glass thickness) : 24mm



Cam Kalınlıkları (glass thickness) : 24mm



Cam Kalınlıkları (glass thickness) : 24mm

